



STORA-DRAIN

In harmony with nature...

LOAD CLASS

according PN-EN 1433:2005

Traffic area classification for drainage channels (load class A15, B125, C250, D400, E600 i F900) test force in kN, construction and testing regulations, conformity labelling and assessment according PN-EN 1433:2005 standard.

KLASA **A 15**

Areas which can only be used by pedestrians and cyclist, and similar areas such as green spaces.

KLASA **B 125**

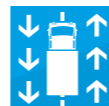
Footways, pedestrian areas and comparable areas, private car parks or car parking decks.

KLASA **C 250**

Kerb sides and non-trafficked areas of hard shoulders and similar.

KLASA **D 400**

Load traffic lanes (including pedestrian streets), hard shoulders and parking areas, for all types of road vehicles.

KLASA **E 600**

Areas subjected to high wheel loads (e.g. ports and dock sides).

KLASA **F 900**

Areas subjected to especially high wheel loads (e.g. aircraft pavements).



TABLE OF CONTENTS

RANGE OF PRODUCTS STORA-DRAIN

4

POLIPROPYLENE DRAINAGE CHANNELS

01 STORA-LIGHT

DRAINAGE AROUND THE HOUSE

6

POLYESTER CONCRETE DRAINAGE CHANNELS

02 STORA HOME

CLASS A15

7

03 STORA SELF

CLASS A15 / B125

9

04 STORA TOP

CLASS B125 / C250

14

05 STORA TOP LINE

CLASS C250

16

06 STORA PARKING

CLASS A15 / C250

17

07 STORA BASE

CLASS B125 / C250

20

08 STORA OPTIMA

CLASS D400 / E600

25

09 STORA OPTIMA PLUS

CLASS D400 / E600

30

10 STORA SUPER

CLASS D400 / F900

34

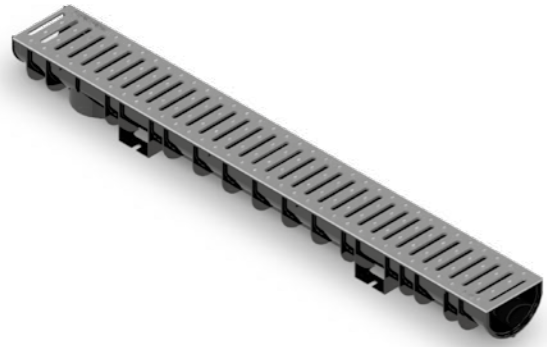


The catalogue/price list is informative and does not constitute an offer within the meaning of the Civil Code. The colors and finish of the product may differ from those shown in the pictures.

KTL
coating

Cast iron gratings with KTL coating for request.

© STORA-DRAIN 01 - 2024



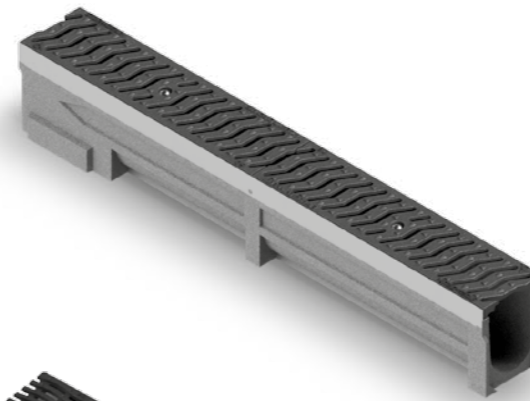
01

STORA-DRAIN
LIGHT

A15

The polipropylene drainage channels designed to be used around private houses.

6



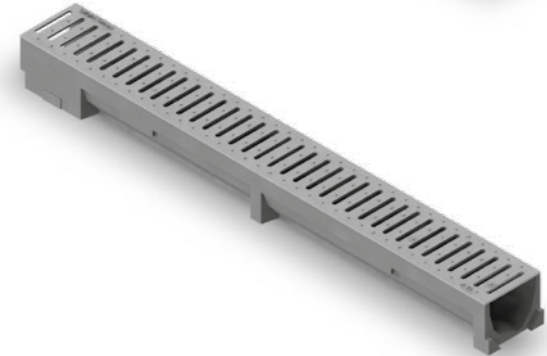
06

STORA-DRAIN
PARKING

A15
C250

The polyester concrete drainage channels with 2mm galvanized steel edges for different destinations depends from the used grating.

17



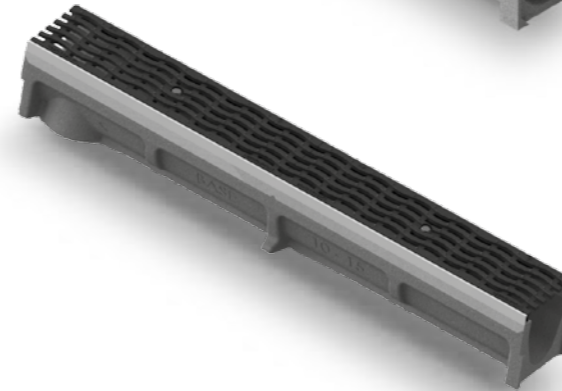
02

STORA-DRAIN
HOME

A15

The polyester concrete drainage channels dedicated to be used around private houses, terraces etc.

7



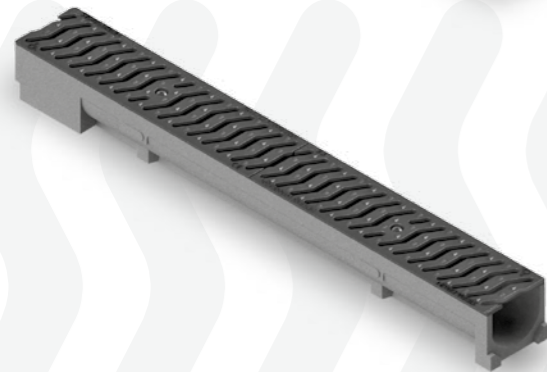
07

STORA-DRAIN
BASE

B125
C250

The latest system of polyester concrete drainage channels with 2mm galvanized profiles for medium traffic load.

20



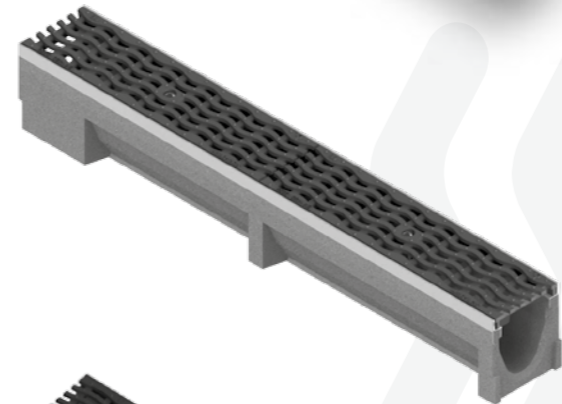
03

STORA-DRAIN
SELF

A15
B125

The polyester concrete drainage channels for surface water drainage around private houses and domestic driveways.

9



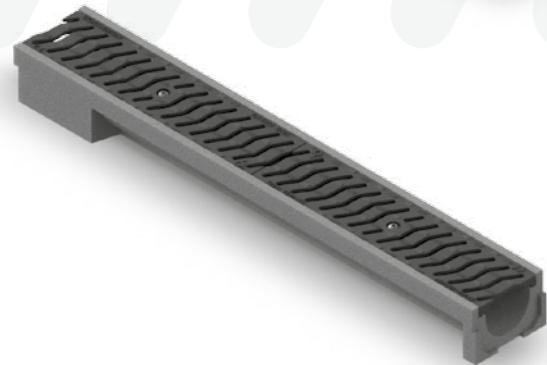
08

STORA-DRAIN
OPTIMA

D400
E600

The polyester concrete channels with 4mm galvanized steel edges for medium to heavy traffic loads. Strong body channel dedicated for industrial estates and car parks.

25



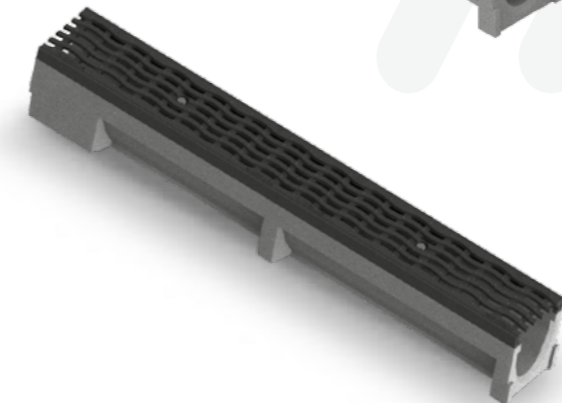
04

STORA-DRAIN
TOP

B125
C250

The polyester concrete drainage channels with plain polymer edge dedicated for special projects like underground car parks.

14



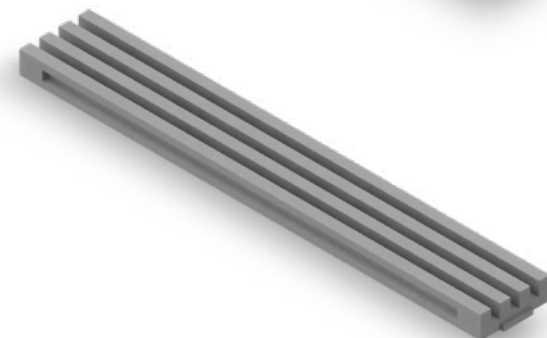
09

STORA-DRAIN
OPTIMA PLUS

D400
E600

The polyester concrete channels with cast iron protective edges for medium to heavy traffic loads. Strong body channel dedicated for industrial estates and car parks that require the ability to withstand occasional heavy loadings.

30



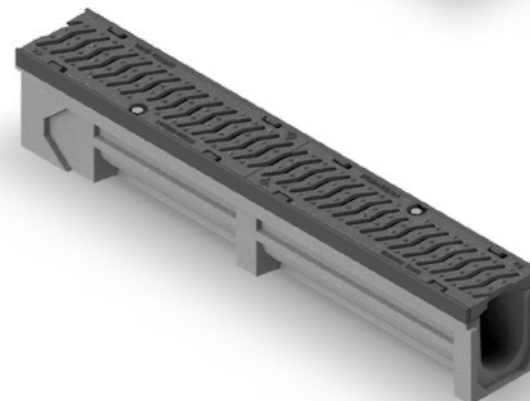
05

STORA-DRAIN
TOP LINE

C250

The polyester concrete drainage channels for the underground car-parks.

16



10

STORA-DRAIN
SUPER

D400
F900

The strongest polyester concrete channels with integrated iron protective edges are ideal solution for surface water drainage in areas with heavy and intensive traffic loads.

34

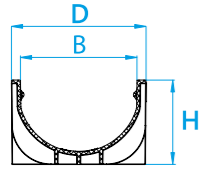
01 LIGHT

STORA-DRAIN

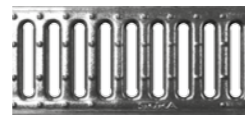
A15



THE POLYPROPYLENE DRAINAGE CHANNELS



A15



- FIX system
- galvanized grating slot 10mm

STORA-DRAIN LIGHT 100

CHANNEL + GRATING

B=100, D=125	L	H	Vertical outlet	Article number	Retail price Eur/pcs.
channel 1,0m	1000	80	Ø 100	SL10081100	15,00

ENDCAP

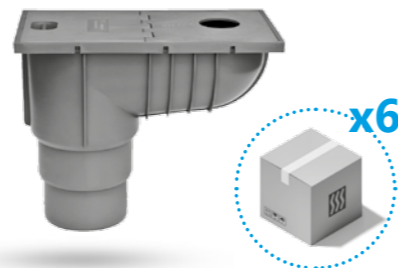
H	Article number	Retail price Eur/pcs.
80	AE10001000	3,00

CONNECTION PIPE

Size	Article number	Retail price Eur/pcs.
Ø 110	SLK1100000	5,00

GULLY GUTTER - VERTICAL

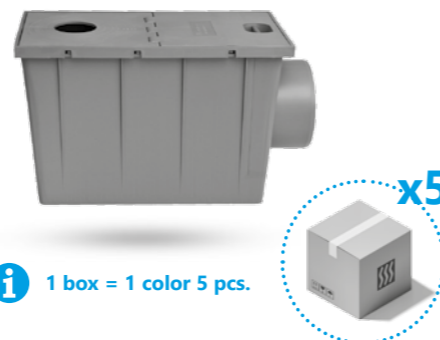
Color	Pcs. / box	Article number	Retail price EUR/pcs.
brown	6 Stück	APU11000BR	13,00
black	6 Stück	APU11000CR	13,00
grey	6 Stück	APU11000SZ	13,00



i 1 box = 1 color 6 pcs.

GULLY GUTTER - SIDE

Color	Pcs. / box	Article number	Retail price EUR/pcs.
brown	5 Stück	APO11000BR	13,00
black	5 Stück	APO11000CR	13,00
grey	5 Stück	APO11000SZ	13,00



i 1 box = 1 color 5 pcs.

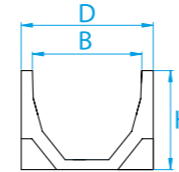
02 HOME

STORA-DRAIN

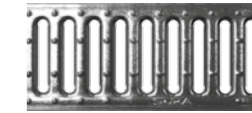
A15



POLYESTER CONCRETE DRAINAGE CHANNELS



A15



- FIX system
- galvanized grating slot 10mm

STORA-DRAIN HOME 100

CHANNEL + GRATING

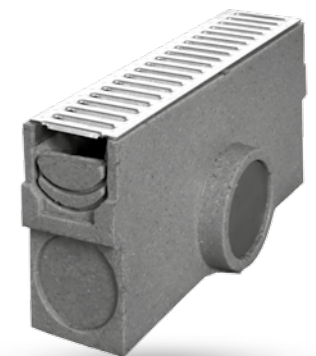
B=100, D=125	H	Vertical outlet	Article number	Retail price Eur/pcs.
channel 1,0m	90	Ø 110*	SE10091100S	23,00
channel 0,5m standard	90	-	SE10095101S	15,00
channel 0,5m cross	90	Ø 110	SE10095101U	16,00
channel 1,0m with pipe Ø 110	90	Ø 110	SE10091100P	30,00

*

SUMP UNIT 100

L	H	Outlet	Grating slot	Article number	Retail price Eur/pcs.
500	250	Ø 110	10 mm	AU10011101	98,00

Sump unit + bucket + grating



ENDCAP 100

H	Outlet	Article number	Retail price Eur/pcs.
90	-	AE10072000	5,00
90	Ø 110	AE10082000	8,00

SIPHON 100

Type	For outlet	Article number	Retail price Eur/pcs.
Two parts siphon - installation only on channel with pipe	Ø 110	AS10400000	15,00



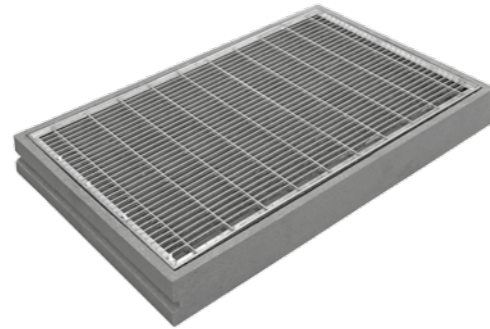
SEALANT

Type	Color	Capacity	Article number	Retail price Eur/pcs.
Sealant to connect elements from polyester concrete	grey	310 ml	PUP0000310	15,00



DOORMAT

L	D	H	Article number	Retail price Eur/pcs.
600	400	80	SW60401804	98,00
750	500	80	SW75501805	144,00
1000	500	80	SW10501806	195,00



Doormat with galvanized mesh grating.

GARDEN GULLY

D	H	Weight	Article number	Retail price Eur/pcs.
270x270	367	16,0	SG25251711	145,00



Garden gully + bucket + siphon + ductile iron grating kN125

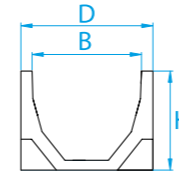
03 SELF

STORA-DRAIN

A15 / B125

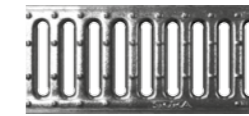


POLYESTER CONCRETE DRAINAGE CHANNELS



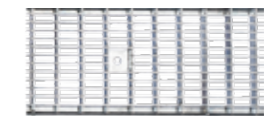
* STORA-DRAIN SELF 100 CHANNEL + GRATING

A15



- FIX system
- galvanized grating slot 10mm

B125

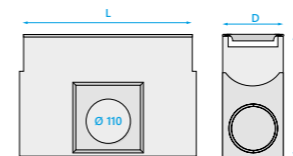


- anchorage screw
- galvanized mesh grating 30x10

B=100 D=120	H	Vertical outlet	Article number	Retail price Eur/pcs.	Article number	Retail price Eur/pcs.
channel 1,0m	60	Ø 110	SE10061100N	20,00	SE10061204N	on request
channel 0,5m standard	60	Ø 110	SE10065101N	14,00	SE10065205N	on request
channel 1,0m	80	Ø 110	SE10081100N	22,00	SE10081204N	on request
channel 0,5m standard	80	Ø 110	SE10085101N	15,00	SE10085205N	on request
channel 1,0m with pipe Ø 110	80	Ø 110	SE10081100PN	30,00	SE10081204PN	on request
channel 1,0m	100	Ø 110	SE10101100SN	25,00	SE10101204SN	on request
channel 0,5m cross	100	Ø 110	SE10105101N	18,00	SE10105205N	on request
channel 1,0m with pipe Ø 110	100	Ø 110	SE10101100PN	33,00	SE10101204PN	on request
channel 1,0m	120	Ø 110	SE10121100N	29,00	SE10121204N	on request
channel 0,5m standard	120	Ø 110	SE10125101N	20,00	SE10125205N	on request
channel 1,0m	160	Ø 110	SE10161100N	34,00	SE10161204N	on request
channel 0,5m standard	160	Ø 110	SE10165101N	23,00	SE10165205N	on request

* half of quantity on one pallet are with possibility to make vertical outlet

SUMP UNIT 100



A15



- One part sump unit + bucket + galvanized grating slot 10mm

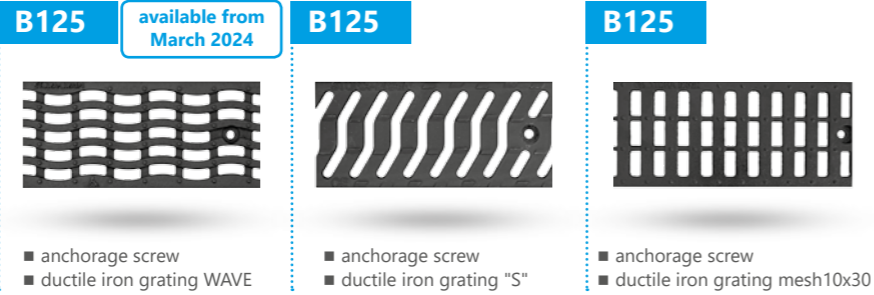
B125



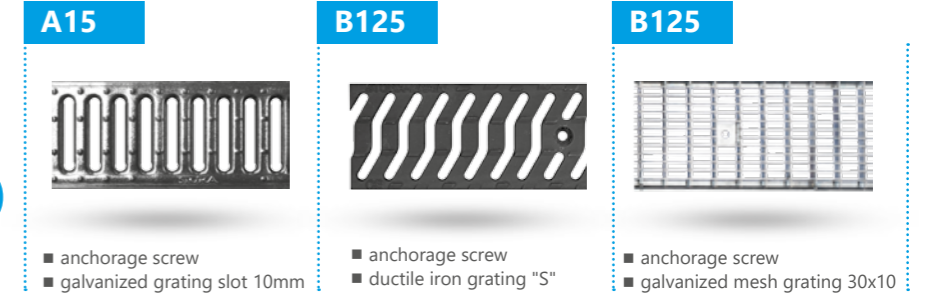
- One part sump unit + bucket + galvanized mesh grating 30x10

L	500	500		
H	250	250		
Outlet front/side	Ø 110	Ø 110		
Article number	AU10011101N for H=60-120	AU11301101 for H=120-160	AU10011205N for H=60-120	AU11301205 for H=120-160
Retail price Eur/pcs.	98,00		on request	

STORA-DRAIN
SELF 100
CHANNEL + GRATING



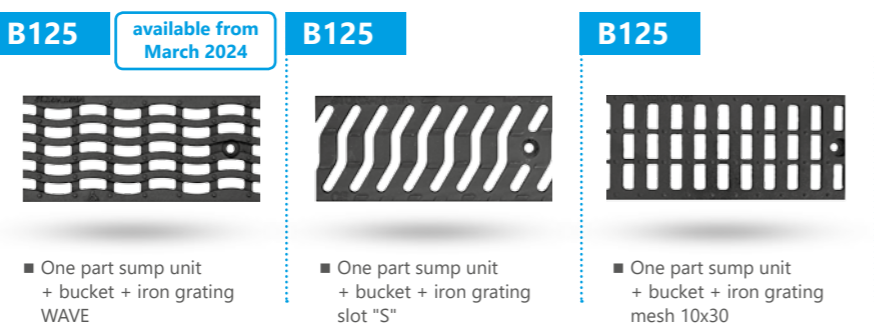
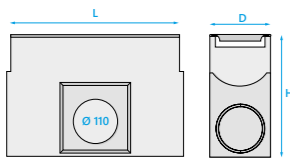
STORA-DRAIN
SELF 150
CHANNEL + GRATING



B=100 D=120	H	Vertical outlet	Article number	Retail price Eur/pcs.	Article number	Retail price Eur/pcs.	Article number	Retail price Eur/pcs.
channel 1,0m	60	Ø 110	SE10061373	47,00	SE10061367	47,00	SE10061334N	47,00
channel 0,5m	60	Ø 110	SE10065373	33,00	SE10065367	33,00	SE10065334N	33,00
channel 1,0m	80	Ø 110	SE10081373	50,00	SE10081367	50,00	SE10081334N	50,00
channel 0,5m	80	Ø 110	SE10085373	35,00	SE10855367	35,00	SE10085334N	35,00
channel 1,0m with pipe Ø 110	80	Ø 110	SE10081373P	58,00	SE10081367P	58,00	SE10081334PN	58,00
channel 1,0m	100	Ø 110	SE10101373S	52,00	SE10101367S	52,00	SE10101334SN	52,00
channel 0,5m cross	100	Ø 110	SE10105373	36,00	SE10105367	36,00	SE10105334N	36,00
channel 1,0m with pipe Ø 110	100	Ø 110	SE10101373P	60,00	SE10101367P	60,00	SE10101334PN	60,00
channel 1,0m	120	Ø 110	SE10121373	56,00	SE10121367	56,00	SE10121334N	56,00
channel 0,5m	120	Ø 110	SE10125373	39,00	SE10125367	39,00	SE10125334N	39,00
channel 1,0m	160	Ø 110	SE10161373	64,00	SE10161367N	64,00	SE10161334N	64,00
channel 0,5m	160	Ø 110	SE10165373	45,00	SE10165367N	45,00	SE10165334N	45,00

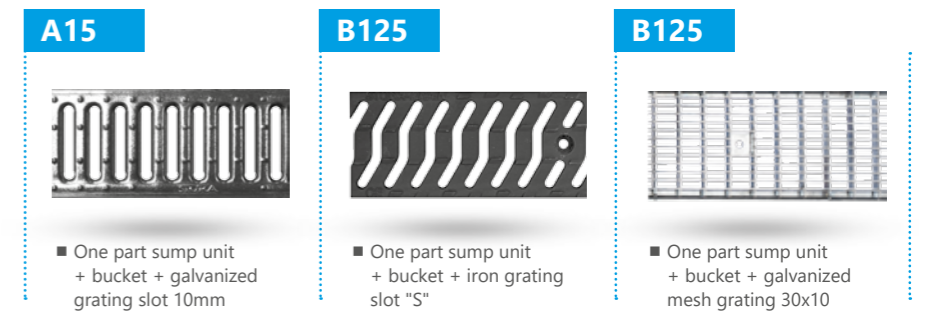
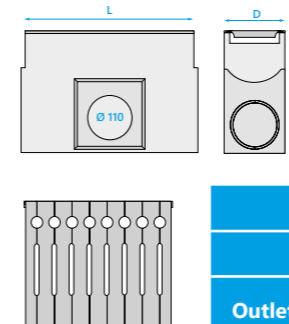
* half of quantity on one pallet are with possibility to make vertical outlet

SUMP UNIT
100



L	500	500	500
H	250	250	250
Outlet front/side	Ø 110	Ø 110	Ø 110
Article number	AU10011373 for H=60-120 AU11301373 for H=120-160	AU10011367 for H=60-120 AU11301367 for H=120-160	AU10011334N for H=60-120 AU11301334 for H=120-160
Retail price Eur/pcs.	108,00	108,00	108,00

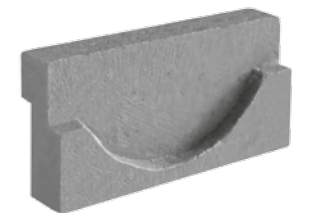
SUMP UNIT
150*



L	500	500	500
H	400	400	400
Outlet front/side	Ø 110/160/200	Ø 110/160/200	Ø 110/160/200
Article number	AU10401111N	AU10401327N	AU10401207N
Retail price Eur/pcs.	180,00	205,00	on request

STEPPED FALL 100/150/200

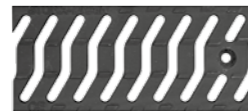
Type	For channel (H)	Article number	Retail price Eur/pcs.
100	H 60/80/100/120	AL10000101	11,00
150	H 120/190	AL15000103	13,00
200	H 130/240	AL20000101	16,00



* For channels SELF 150 / H=120 or SELF 200 / H=130, is necessary to buy STEPPED FALL to connect channels with SUMP UNIT.

STORA-DRAIN
SELF 200
CHANNEL + GRATING

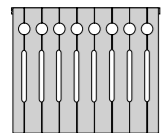
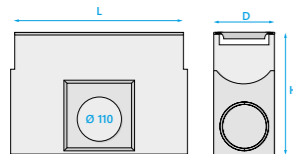
B125



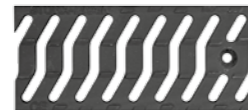
- anchorage screw
- ductile iron grating "S"

B=200 D=245	H	Vertical outlet	Article number	Retail price Eur/pcs.
channel 1,0m	130	Ø 200	SE20131326	128,00
channel 1,0m	240	Ø 200	SE20241326N	144,00
channel 0,5m standard	240	Ø 200	SE20245326N	95,00

SUMP UNIT 200*



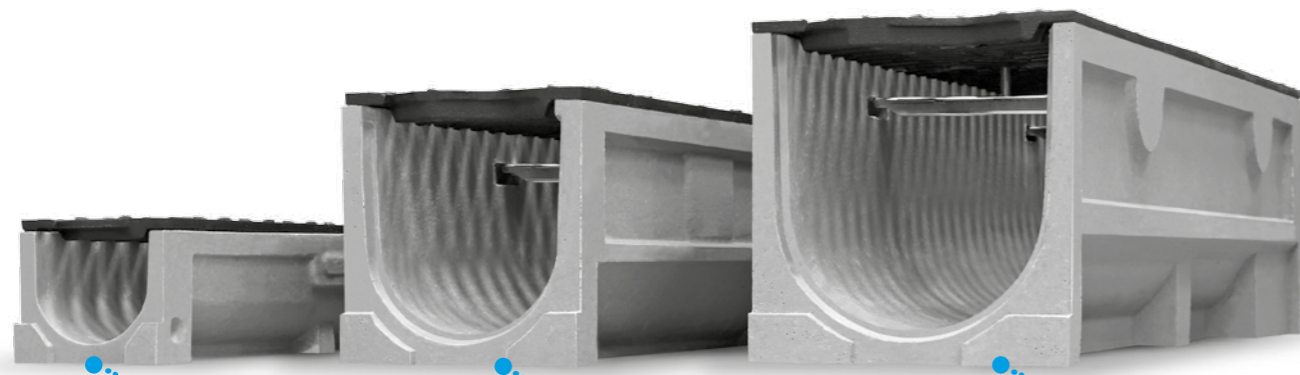
B125



- One part sump unit + bucket + iron grating slot "S"

L	500
H	500
Outlet front/side	Ø 110/160/200
Article number	AU10401326N
Retail price Eur/pcs.	239,00

* For channels SELF 150 / H=120 or SELF 200 / H=130, is necessary to buy STEPPED FALL to connect channels with SUMP UNIT.



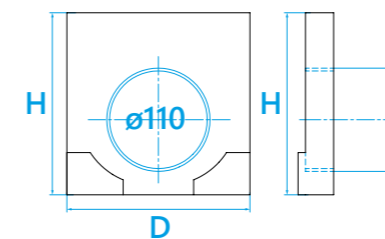
SELF 100

SELF 150

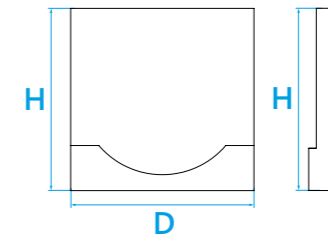
SELF 200

ENDCAPS 100/150/200

Type	H	Outlet	Article number	Retail price Eur/pcs.
100	60	-	AE10062000N	4,00
100	60	Ø 50	AE10262000N	8,00
100	80	-	AE10012000N	4,00
100	80	Ø 110	AE10172000N	8,00
100	100	-	AE10102000N	4,00
100	100	Ø 110	AE10112000N	8,00
100	120	-	AE10022000N	5,00
100	120	Ø 110	AE10032000N	8,00
100	160	-	AE10042000N	5,00
100	160	Ø 110	AE10052000N	8,00
150	120	-	AE15022000	13,00
150	190	-	AE15002000N	13,00
150	190	Ø 110	AE15012000N	19,00
200	130	-	AE20022000	13,00
200	240	-	AE20002000	13,00
200	240	Ø 160	AE20012000	19,00



Endcap with pipe



Closed endcap

SIPHON 100

Type	For outlet	Article number	Retail price Eur/pcs.
Two parts siphon - installation only on channel with pipe	Ø 110	AS10400000	15,00



SEALANT

Type	Color	Capacity	Article number	Retail price Eur/pcs.
Sealant to connect elements from polyester concrete	grey	310 ml	PUP0000310	15,00

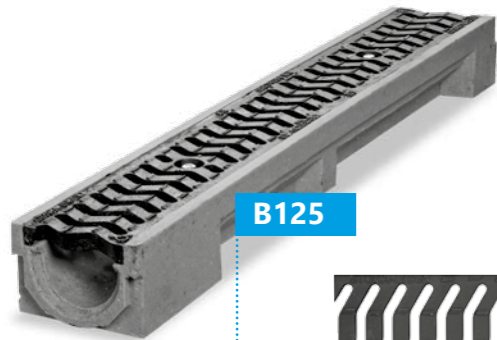
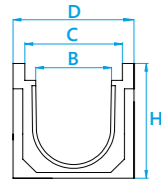


04 STORA-DRAIN TOP

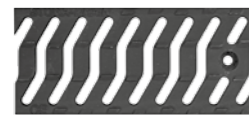
B125 / C250



POLYESTER CONCRETE DRAINAGE CHANNEL WITH POLYESTER CONCRETE EDGE

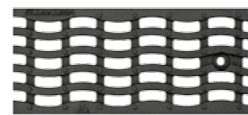


B125



- anchorage screw
- ductile iron grating "S"

C250



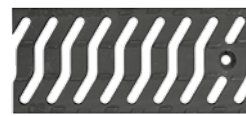
- anchorage screw
- ductile iron grating "Wave"

STORA-DRAIN TOP 100 CHANNEL + GRATING

B=100, C=125 D=158	H	Vertical outlet	Article number	Retail price Eur/ pcs.	Article number	Retail price Eur/ pcs.
channel 1,0m	65	Ø 110	ST10061367	60,00	ST10061352	65,00
channel 0,5m standard	65	–	ST10655367	39,00	ST10065352	42,00
channel 1,0m	100	Ø 110	ST10101367	65,00	ST10101352	70,00
channel 0,5m standard	100	–	ST10105367	42,00	ST10105352	45,00
channel 1,0m	150	Ø 110	–	–	ST10151352	79,00
channel 0,5m	150	–	–	–	ST10155352	51,00

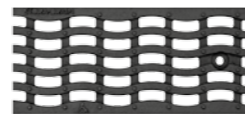
SUMP UNIT 100

B125

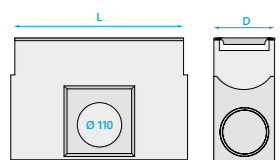


- One part sump unit + bucket + iron grating slot "S"

C250



- One part sump unit + bucket + iron grating slot "Wave"



L	500	500
H	300	300
Outlet front/ side	Ø 110, 110	Ø 110, 110
Article number	AU10101367	AU10101352
Retail price Eur/pcs.	105,00	112,00

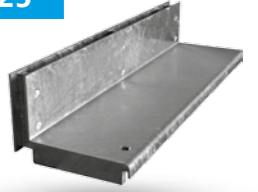
STORA-DRAIN TOP 100 CHANNEL + GRATING

B125



- galvanized grating CENTRIC
- useful height H=120

B125



- galvanized grating EXCENTRIC
- useful height H=105

B=100, C=125 D=158	Nr	H	Vertical outlet	Article number	Retail price Eur/pcs.	Article number	Retail price Eur/pcs.
channel 1,0m	06	65	Ø 110	ST10061705N	172,00	ST10061712N	172,00
channel 1,0m	10	100	Ø 110	ST10101705N	181,00	ST10101712N	181,00
channel 0,5m standard	10	100	–	ST10105706N	128,00	ST10105713N	128,00
channel 1,0m	15	150	Ø 110	ST10151705N	191,00	ST10151712N	191,00

SUMP UNIT 100

L	H	Outlet front/ side	Article number	Retail price Eur/pcs.
500	300	Ø 110, 110	AU10101711N	228,00

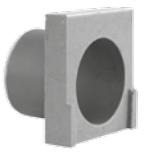
B125



- One part sump unit + bucket + grating for system CENTRIC/ EXCENTRIC

ENDCAPS 100

Nr	H	Outlet	Article number	Retail price Eur/pcs.
06	65	–	AE10123000	12,00
06A	65	Ø 50	AE10133000	18,00
010	100	–	AE10083000	12,00
010A	100	Ø 110	AE10093000	18,00
015	150	–	AE10103000	12,00
015A	150	Ø 110	AE10113000	18,00



SEALANT

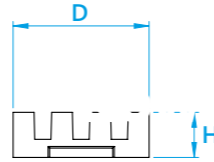
Type	Color	Capacity	Article number	Retail price Eur/pcs.
Sealant to connect elements from polyester concrete	grey	310 ml	PUP0000310	15,00



05

TOP LINE

C250

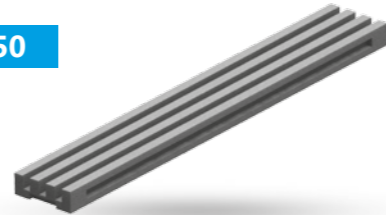


CHANNEL BODY FOR UNDERGROUND CAR-PARKS

STORA-DRAIN
TOP LINE 150

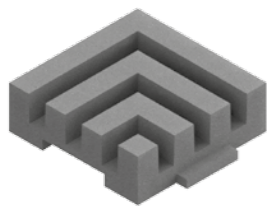
CHANNEL BODY

C250

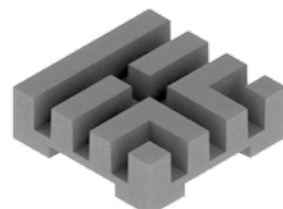


D=150	L	H	Vertical outlet	Article number	Retail price Eur/pcs.
channel 1,0m standard	1000	50	-	ST15051000	38,00
channel 0,5m standard	500	50	-	ST15055000	23,00
channel 0,5m with pipe	500	50	Ø 110	ST15055000P	31,00
cross connection	L=D 150	50	-	AL15001000	26,00
"T" connection	L=D 150	50	-	AL15002000	26,00
closed endcap	30	50	-	AE15003000	12,00

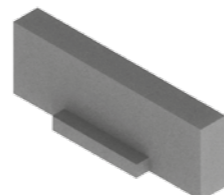
D = building width; H = building height



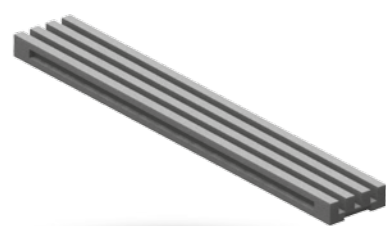
cross connection



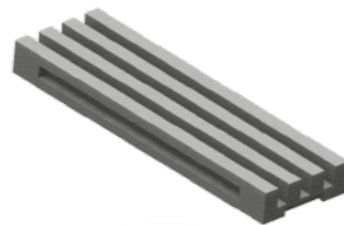
"T" connection



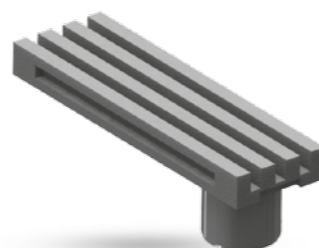
closed endcap



channel 1,0m standard



channel 0,5m standard



channel 0,5m with pipe

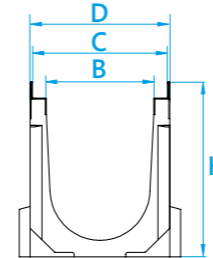
06

STORA-DRAIN PARKING

A15 / C250



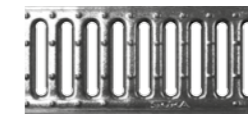
POLYESTER CONCRETE DRAINAGE CHANNEL WITH 2MM GALVANIZED PROFILE



STORA-DRAIN
PARKING 100

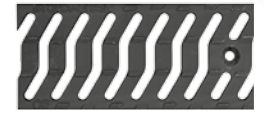
CHANNEL + GRATING

A15



- anchorage screw
- galvanized grating slot 10mm

C250



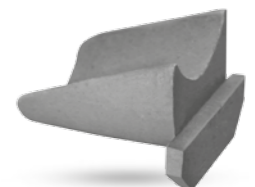
- anchorage screw
- ductile iron grating "S"

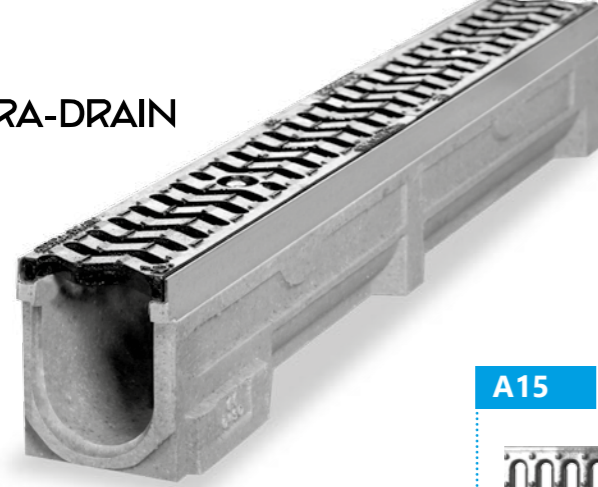


B=100 C=125 D=130	Nr	H	Vertical outlet	Cross channel	Article number	Retail price Eur/pcs.	Article number	Retail price Eur/pcs.
channel 1,0m	-	80	Ø 110	-	SP10081104	56,00	SP10081321	84,00
channel 1,0m	0	100	Ø 110	-	SP10101104	64,00	SP10101321	92,00
channel 0,5m	0	100	-	-	SP10105105	45,00	SP10105321	64,00
channel 1,0m	03	160	Ø 110	-	SP10161104	64,00	SP10161321	92,00
channel 0,5m	03	160	Ø 110	yes	SP10165105	45,00	SP10165321	64,00
channel 1,0m	010	195	Ø 110	-	SP10191104	69,00	SP10191321	100,00
channel 0,5m	010	195	Ø 110	yes	SP10195105	48,00	SP10195321	70,00
channel 1,0m	020	245	Ø 110	-	SP10241104	73,00	SP10241321	105,00
channel 0,5m	020	245	Ø 110	yes	SP10245105	51,00	SP10245321	73,00
channel 1,0m	030	295	Ø 110	-	SP10291104	81,00	SP10291321	114,00
channel 0,5m	030	295	Ø 110	yes	SP10295105	57,00	SP10295321	80,00

STEPPED FALL 100

Type	For channel (H)	Article number	Retail price Eur/pcs.
100	H 195/245/295	AL10000000	15,00



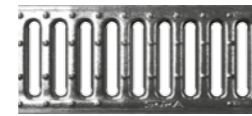


STORA-DRAIN

PARKING 100

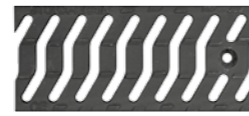
CHANNEL with built-in fall 0,5% + GRATING

A15



- anchorage screw
- galvanized grating slot 10mm

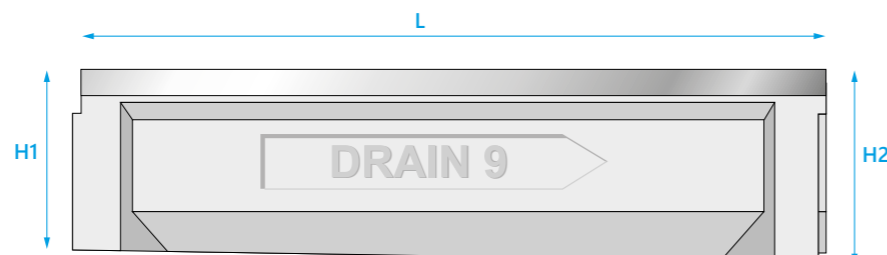
C250



- anchorage screw
- ductile iron grating "S"

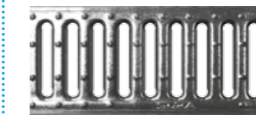
B=100 C=125 D=130	Nr	H1	H2	Vertical outlet	Article number	Retail price Eur/pcs.	Article number	Retail price Eur/pcs.
channel 1,0m	1	150	155	-	SP10001104	67,00	SP10001321	98,00
channel 1,0m	2	155	160	-	SP10002104	67,00	SP10002321	98,00
channel 1,0m	3	160	165	-	SP10003104	67,00	SP10003321	98,00
channel 1,0m	4	165	170	-	SP10004104	67,00	SP10004321	98,00
channel 1,0m	5	170	175	Ø 110	SP10005104	67,00	SP10005321	98,00
channel 1,0m	6	175	180	-	SP10006104	67,00	SP10006321	98,00
channel 1,0m	7	180	185	-	SP10007104	67,00	SP10007321	98,00
channel 1,0m	8	185	190	-	SP10008104	67,00	SP10008321	98,00
channel 1,0m	9	190	195	-	SP10009104	67,00	SP10009321	98,00
channel 1,0m	10	195	200	Ø 110	SP10010104	67,00	SP10010321	98,00
channel 1,0m	11	200	205	-	SP10011104	75,00	SP10011321	105,00
channel 1,0m	12	205	210	-	SP10012104	75,00	SP10012321	105,00
channel 1,0m	13	210	215	-	SP10013104	75,00	SP10013321	105,00
channel 1,0m	14	215	220	-	SP10014104	75,00	SP10014321	105,00
channel 1,0m	15	220	225	Ø 110	SP10015104	75,00	SP10015321	105,00
channel 1,0m	16	225	230	-	SP10016104	75,00	SP10016321	105,00
channel 1,0m	17	230	235	-	SP10017104	75,00	SP10017321	105,00
channel 1,0m	18	235	240	-	SP10018104	75,00	SP10018321	105,00
channel 1,0m	19	240	245	-	SP10019104	75,00	SP10019321	105,00
channel 1,0m	20	245	250	Ø 110	SP10020104	75,00	SP10020321	105,00

STORA PARKING channel B=100 with built-in fall 0,5%



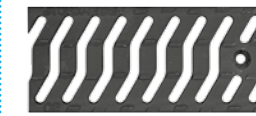
SUMP UNIT 100

A15

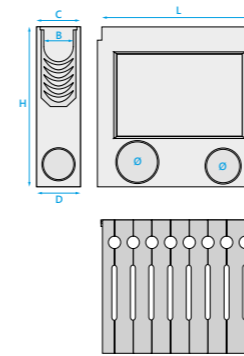


- One part sump unit + bucket + galvanized grating slot 10mm

C250



- One part sump unit + bucket + iron grating slot "S"



L	500	500	500	500
H	400*	590	400*	590
Outlet front/side	Ø 110/160	Ø 110/160	Ø 110/160	Ø 110/160
Article number	AU11801105	AU10201105	AU11801321	AU10201321
Retail price Eur/pcs.	133,00	155,00	142,00	165,00

* only for channels H=80/100/160/195



ENDCAPS 100

Typ	Nr	H	Installation at the beginning or end of channel	Ready outlet with rubber and cap	Article number	Retail price Eur/pcs.
100	-	80	-	geschlossen	AE10084000	12,00
100	0	100	nr 0	geschlossen	AE10004000	12,00
100	1-5/03	175	nr 1 till 5 / nr 03	geschlossen	AE10074000	20,00
100	1-5/03	175	nr 1 till 5 / nr 03	Ø 110	AE10014000	28,00
100	6-10/010	195	nr 6 till 10 / nr 010	Ø 110	AE10024000	28,00
100	11-15	225	nr 11 till 15	Ø 110	AE10034000	28,00
100	16-20/020	245	nr 16 till 20 / nr 020	Ø 110	AE10044000	28,00
100	030	295	nr 030	Ø 110	AE10054000	28,00

SEALANT

Type	Color	Capacity	Article number	Retail price Eur/pcs.
Sealant to connect elements from polyester concrete	grey	310 ml	PUP0000310	15,00



07

STORA-DRAIN

BASE

B125 / C250



POLYESTER CONCRETE DRAINAGE CHANNEL WITH 2MM GALVANIZED PROFILE

B125



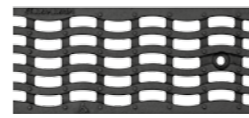
- anchorage screw
- galvanized mesh grating 30x10

C250



- anchorage screw
- galvanized mesh grating 30x10

C250



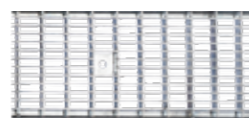
- anchorage screw
- ductile iron grating "WAVE"

BASE 100

CHANNEL + GRATING

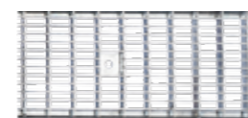
B=100, C=132 D=140	H	Vertical outlet	Article number	Retail price Eur/pcs.	Article number	Retail price Eur/pcs.	Article number	Retail price Eur/pcs.
channel 1,0m	80	Ø 110	SB10081223	on request	SB10081225	on request	SB10081352	77,00
channel 0,5m standard	80	Ø 110	SB10085224	on request	SB10085226	on request	SB10085352	53,00
channel 1,0m	100	Ø 110	SB10101223	on request	SB10101225	on request	SB10101352	77,00
channel 0,5m standard	100	Ø 110	SB10105224	on request	SB10105226	on request	SB10105352	53,00
channel 1,0m	150	Ø 110	SB10151223	on request	SB10151225	on request	SB10151352	85,00
channel 0,5m standard	150	Ø 110	SB10155224	on request	SB10155226	on request	SB10155352	59,00
channel 1,0m	200	Ø 110	SB10201223	on request	SB10201225	on request	SB10201352	97,00
channel 0,5m standard	200	Ø 110	SB10205224	on request	SB10205226	on request	SB10205352	67,00
channel 1,0m	250	Ø 110	SB10251223	on request	SB10251225	on request	SB10251352	108,00
channel 0,5m standard	250	Ø 110	SB10255224	on request	SB10255226	on request	SB10255352	76,00

B125



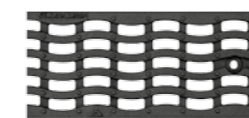
- One part sump unit + bucket + galvanized mesh grating 30x10

C250



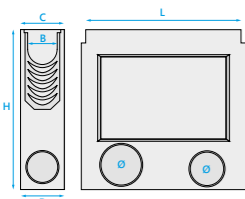
- One part sump unit + bucket + galvanized mesh grating 30x10

C250

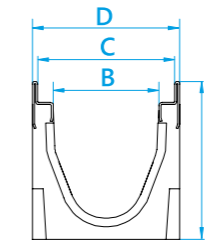


- One part sump unit + bucket + iron grating "WAVE"

SUMP UNIT 100



L	500		500		500	
H	370	470	370	470	370	470
Outlet front/ side	Ø 110		Ø 110		Ø 110	
Article number	AU11901224 do H=100-150	AU11911224 do H=100-250	AU11901226 do H=100-150	AU11911226 do H=100-250	AU11901352 do H=80-150	AU11911352 do H=100-250
Retail price Eur/pcs.	on request	on request	on request	on request	142,00	165,00



BASE 150

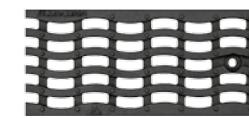
CHANNEL + GRATING

C250



- anchorage screw
- galvanized mesh grating 30x10

C250

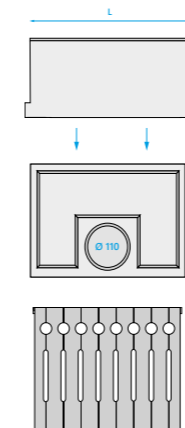


- anchorage screw
- ductile iron grating "WAVE"

B=150 C=182 D=190	H	Vertical outlet	Article number	Retail price Eur/pcs.	Article number	Retail price Eur/pcs.
channel 1,0m	120	Ø 160	SB15121229	on request	SB15121353	116,00
channel 0,5m standard	120	Ø 160	SB15125230	on request	SB15125353	81,00
channel 1,0m	195	Ø 160	SB15191229	on request	SB15191353	134,00
channel 0,5m standard	195	Ø 160	SB15195230	on request	SB15195353	93,00
channel 1,0m	245	Ø 160	SB15241229	on request	SB15241353	144,00
channel 0,5m standard	245	Ø 160	SB15245230	on request	SB15245353	101,00

All dimensions B, C, D, H are in mm, half of quantity on one pallet are with possibility to make vertical outlet.

SUMP UNIT 150

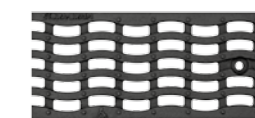


C250



- Two parts sump unit + bucket + galvanized mesh grating 30x10

C250



- Two parts sump unit + bucket + iron grating "WAVE"

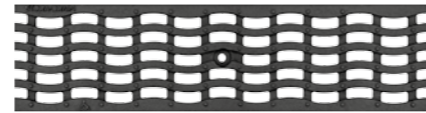
L	500	500	500	500
H	665	270	665	270
Outlet front/ side	Ø 110/160	Ø 110	Ø 110/160	Ø 110
Article number	AU10411230*	AU11921230**	AU10411353*	AU11921353**
Retail price Eur/pcs.	on request	on request	272,00	160,00

- * 2-parts sump unit for channels H=245 - H=295
- ** 1-part sump unit for channel H=120

All dimensions B, D, L, H are in mm.

STORA-DRAIN
BASE 200
 CHANNEL + GRATING

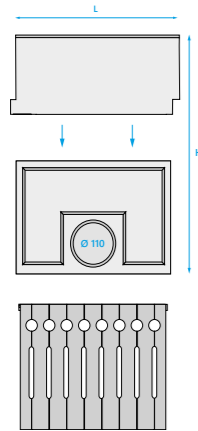
C250



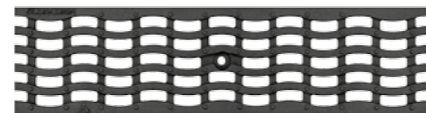
- anchorage screw
- ductile iron grating "WAVE"

B=200 C=232 D=240	H	Vertical outlet	Article number	Retail price Eur/pcs.
channel 1,0m	120	Ø 200	SB20212354	153,00
channel 0,5m	120	Ø 200	SB20125354	107,00
channel 1,0m	245	Ø 200	SB20241354	181,00
channel 0,5m	245	Ø 200	SB20245354	127,00
channel 1,0m	295	Ø 200	SB20291354	197,00
channel 0,5m	295	Ø 200	SB20295354	138,00

SUMP UNIT 200



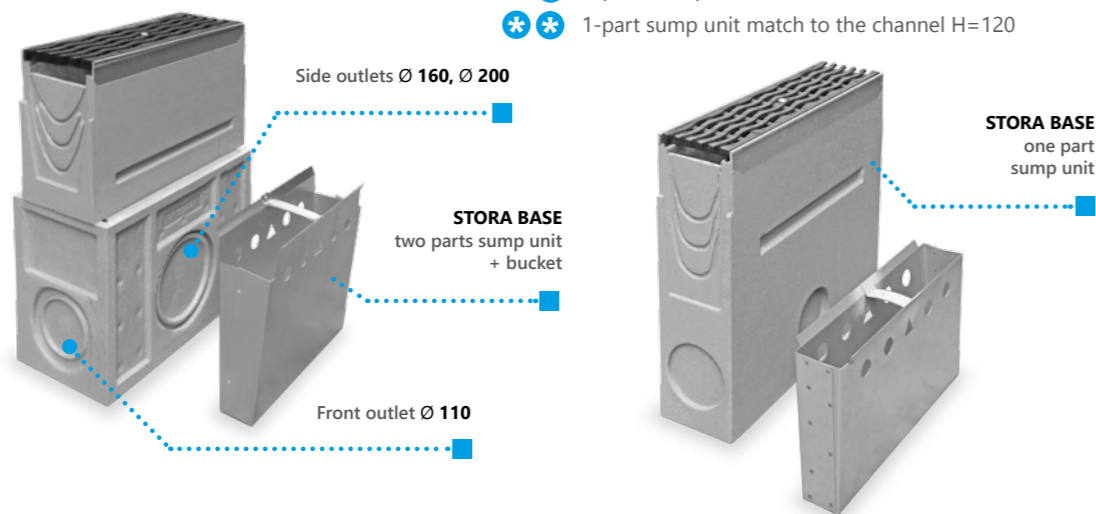
C250



- Two parts sump unit + bucket + iron grating "WAVE"

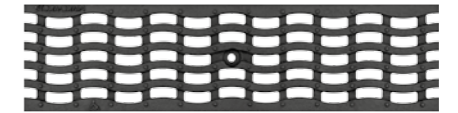
L	500	500
H	700	270
Outlet front/side	Ø 160/200	Ø 110
Article number	AU10411354 *	AU11931354 * *
Retail price Eur/pcs.	308,00	185,00

- * 2-parts sump unit match to the channels H=245 - H=295
- * * 1-part sump unit match to the channel H=120



STORA-DRAIN
BASE 300
 CHANNEL + GRATING

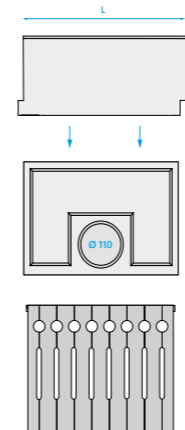
C250



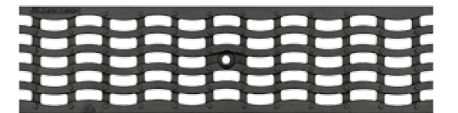
- anchorage screw
- ductile iron grating "WAVE"

B=300 C=332 D=340	H	Vertical outlet	Article number	Retail price Eur/pcs.
channel 1,0m	295	Ø 200	SB30291355	291,00
channel 0,5m standard	295	Ø 200	SB30295355	203,00

SUMP UNIT 300

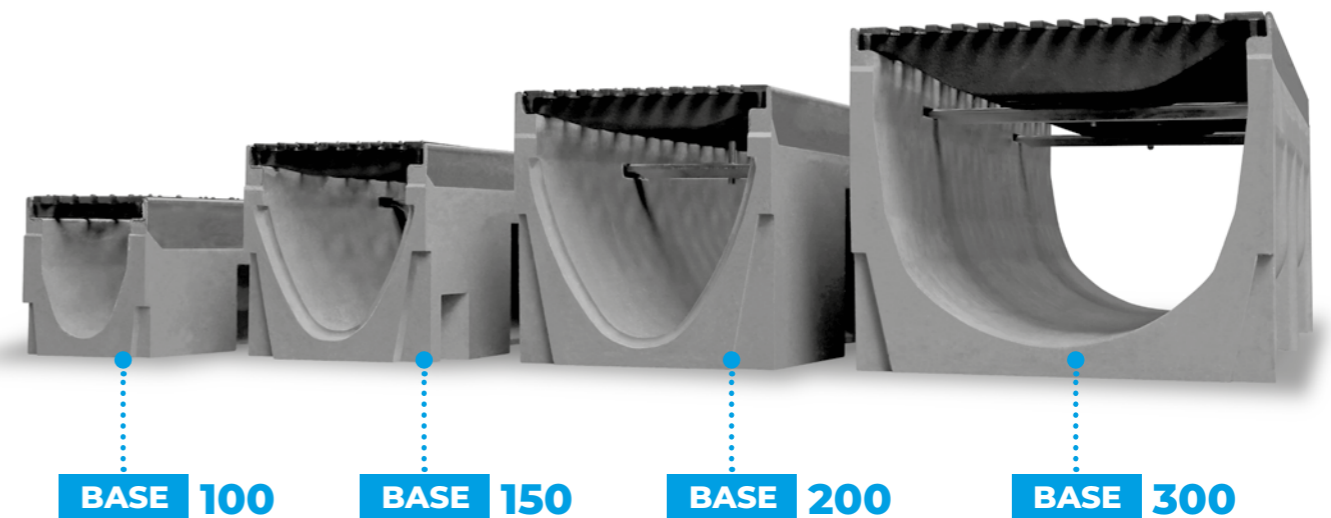


C250



- Two parts sump unit + bucket + iron grating "WAVE"

L	500
H	645
Outlet front/side	Ø 110/160/200
Article number	AU10601355
Retail price Eur/pcs.	344,00

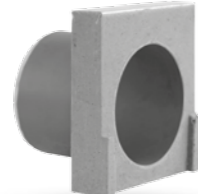


ENDCAPS 100/150/200/300

Typ	H	Outlet	Article number	Retail price Eur/pcs.
100	80	closed	AE10099000	20,00
100	100	closed	AE10079000	20,00
100	100	with pipe Ø 110	AE10089000	28,00
100	150	closed	AE10019000	20,00
100	150	with pipe Ø 110	AE10029000	28,00
100	200	closed	AE10039000	20,00
100	200	with pipe Ø 110	AE10049000	28,00
100	250	closed	AE10059000	20,00
100	250	with pipe Ø 110	AE10069000	28,00
150	120	closed	AE15029000	20,00
150	195	Ø 110 universal	AE15009000	28,00
150	245	Ø 110 universal	AE15019000	28,00
200	120	closed	AE20019000	20,00
200	245	Ø 160 universal	AE20009000	31,00
200	295	Ø 160 universal	AE20029000	31,00
300	295	Ø 200 universal	AE30008000	53,00



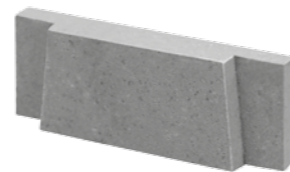
Closed



with pipe



Universal



STEPPED FALL 100/150

Type	For channel (H)	Article number	Retail price Eur/pcs.
100	H 150/200/250	AL10000102	15,00
150	H 195/245	AL15000102	20,00
200	H 245/295	AL20000102	26,00

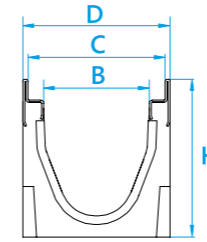
SEALANT

Type	Color	Capacity	Article number	Retail price Eur/pcs.
Sealant to connect elements from polyester concrete	grey	310 ml	PUP0000310	15,00



08 STORA-DRAIN OPTIMA

D400 / E600



OPTIMA 100 CHANNEL + GRATING

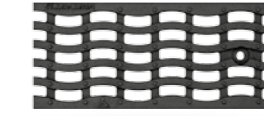
POLYESTER CONCRETE DRAINAGE CHANNEL WITH 4MM GALVANIZED PROFILE

D400



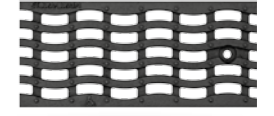
- anchorage screw
- galvanized mesh grating 25x10

D400



- anchorage screw
- ductile iron grating "WAVE"

E600



- anchorage screw
- ductile iron grating "WAVE"

B=100 C=132 D=140	H	Vertical outlet	Article number	Retail price Eur/pcs.	Article number	Retail price Eur/pcs.	Article number	Retail price Eur/pcs.
channel 1,0m	150	Ø 110	SO10151219	on request	SO10151356	107,00	SO10151370	114,00
channel 0,5m cross	150	Ø 110	SO10155220	on request	SO10155356	75,00	SO10155370	80,00
channel 1,0m	200	Ø 110	SO10201219	on request	SO10201356	116,00	SO10201370	123,00
channel 0,5m cross	200	Ø 110	SO10205220	on request	SO10205356	81,00	SO10205370	86,00
channel 1,0m	250	Ø 110	SO10251219	on request	SO10251356	130,00	SO10251370	137,00
channel 0,5m cross	250	Ø 110	SO10255220	on request	SO10255356	91,00	SO10255370	96,00

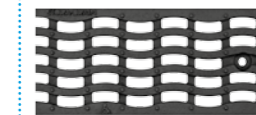
SUMP UNIT 100

D400



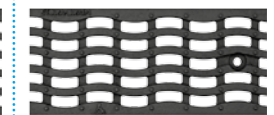
- One part sump unit + bucket + galvanized mesh grating 25x10

D400

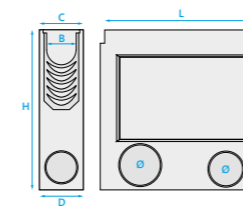


- One part sump unit + bucket + iron grating "WAVE"

E600

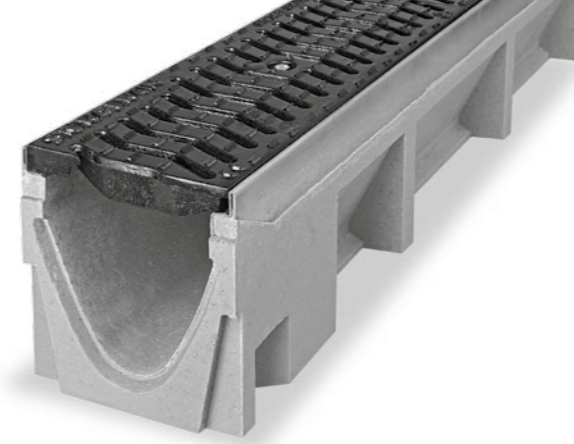


- One part sump unit + bucket + iron grating "WAVE"



L	500	500	500
H	500	500	500
Outlet front/side	Ø 110/160	Ø 110/160	Ø 110/160
Article number	AU11701220	AU11701356	AU11701370
Retail price Eur/pcs.	on request	181,00	184,00

All dimensions B, C, D, H are in mm, half of quantity on one pallet are with possibility to make vertical outlet.



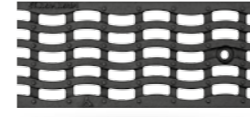
STORA-DRAIN
OPTIMA 150
CHANNEL + GRATING

D400



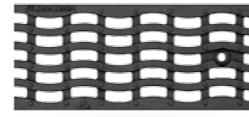
- anchorage screw
- galvanized mesh grating 25x10

D400



- anchorage screw
- ductile iron grating "WAVE"

E600

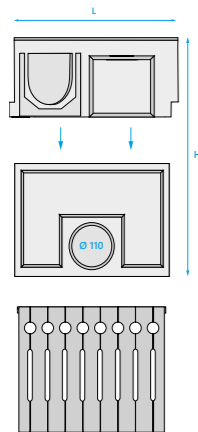


- anchorage screw
- ductile iron grating "WAVE"

B=150 C=182 D=190	H	Vertical outlet	Article number	Retail price Eur/pcs.	Article number	Retail price Eur/pcs.	Article number	Retail price Eur/pcs.
channel 1,0m	195	Ø 160	SO15191221	on request	SO15191357	153,00	SO15191371	172,00
channel 0,5m cross	195	Ø 160	SO15195222	on request	SO15195357	107,00	SO15195371	120,00
channel 1,0m	245	Ø 160	SO15241221	on request	SO15241357	160,00	SO15241371	179,00
channel 0,5m cross	245	Ø 160	SO15245222	on request	SO15245357	112,00	SO15245371	125,00

i All dimensions **B, C, D, H** are in **mm**, half of quantity on one pallet are with possibility to make vertical outlet.

SUMP UNIT
150

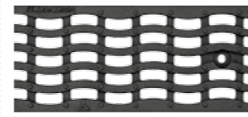


D400



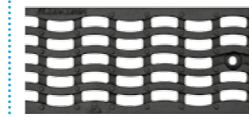
- Two parts sump unit + bucket + galvanized mesh grating 25x10

D400



- Two parts sump unit + bucket + iron grating "WAVE"

E600



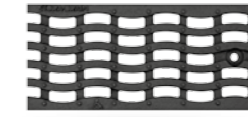
- Two parts sump unit + bucket + iron grating "WAVE"

L	500	500	500
H	655	655	655
Outlet front/side	Ø 110/160/200	Ø 110/160/200	Ø 110/160/200
Article number	AU10401222	AU10401357	AU10401371
Retail price Eur/pcs.	on request	289,00	307,00

i All dimensions **B, D, L, H** are in **mm**.

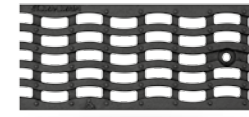
STORA-DRAIN
OPTIMA 200
CHANNEL + GRATING

D400



- anchorage screw
- ductile iron grating "WAVE"

E600

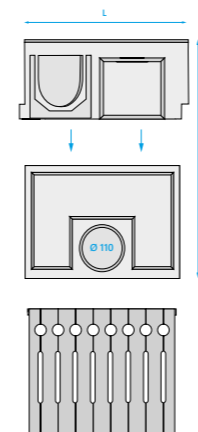


- anchorage screw
- ductile iron grating "WAVE"

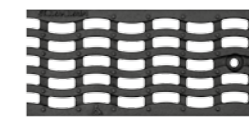
B=200 C=232 D=240	H	Vertical outlet	Cross channel	Retail price Eur/pcs.	Article number	Retail price Eur/pcs.	Verkaufspreis Eur/Stück
channel 1,0m	245	Ø 200	-	SO20241358	195,00	SO20241372	237,00
channel 0,5m cross	245	Ø 200	yes	SO20245358	137,00	SO20245372	166,00

i All dimensions **B, C, D, H** are in **mm**, half of quantity on one pallet are with possibility to make vertical outlet.

SUMP UNIT
200

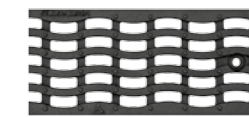


D400



- Two parts sump unit + bucket + iron grating "WAVE"

E600



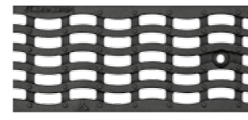
- Two parts sump unit + bucket + iron grating "WAVE"

L	500	500
H	655	655
Outlet front/side	Ø 110/160/200	Ø 110/160/200
Article number	AU10401358	AU10401372
Retail price Eur/pcs.	301,00	360,00

i All dimensions **B, D, L, H** are in **mm**.

STORA-DRAIN
OPTIMA 300
CHANNEL + GRATING

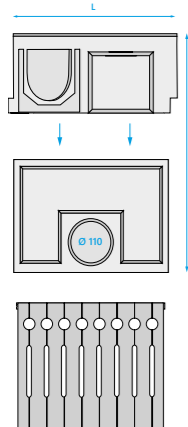
D400



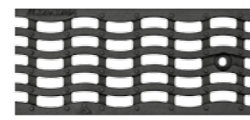
- anchorage screw
- ductile iron grating "WAVE"

B=300 C=332 D=340	H	Vertical outlet	Cross channel	Retail price Eur/pcs.	Article number
channel 1,0m	295	Ø 200	-	SO30291359	319,00
channel 0,5m standard	295	Ø 200	no	SO30295359	223,00

SUMP UNIT 300



D400



- Two parts sump unit + bucket
- iron grating "WAVE"

L	500
H	645
Outlet front/side	Ø 110/160/200
Article number	AU10601359
Retail price Eur/pcs.	367,00

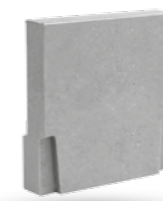
SEALANT

Type	Color	Capacity	Article number	Retail price Eur/pcs.
Sealant to connect elements from polyester concrete	grey	310 ml	PUP0000310	15,00

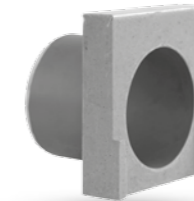


ENDCAPS 100/150/200/300

Type	H	Outlet	Article number	Retail price Eur/pcs.
100	150	closed	AE10018000	20,00
100	150	Ø 110 with pipe	AE10028000	28,00
100	200	closed	AE10038000	20,00
100	200	Ø 110 with pipe	AE10048000	28,00
100	250	closed	AE10058000	20,00
100	250	Ø 110 with pipe	AE10068000	28,00
150	195	Ø 110 universal	AE15008000	28,00
150	245	Ø 110 universal	AE15018000	28,00
200	245	Ø 160 universal	AE20008000	31,00
300	295	Ø 200 universal	AE30008000	53,00



Closed



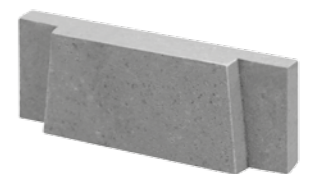
With pipe



Universal

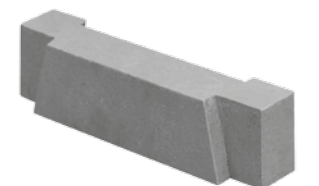
STEPPED FALL 100

Type	For channel (H)	Article number	Retail price Eur/pcs.
100	H 150/200/250	AL10000100	15,00



STEPPED FALL 150

Type	For channel (H)	Article number	Retail price Eur/pcs.
150	H 195/245	AL15000200	20,00

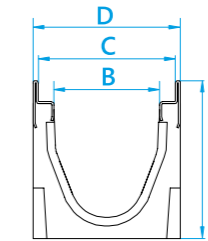


09

STORA-DRAIN

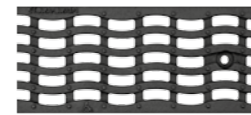
OPTIMA PLUS D400 / E600

POLYESTER CONCRETE DRAINAGE CHANNEL WITH PROTECTIVE IRON PROFILE



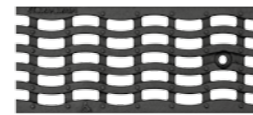
STORA-DRAIN OPTIMA PLUS 100 CHANNEL + GRATING

D400



- anchorage screw
- ductile iron grating "WAVE"

E600

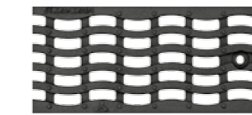


- anchorage screw
- ductile iron grating "WAVE"

B=100 C=132 D=140	H	Vertical outlet	Cross channel	Article number	Retail price Eur/pcs.	Article number	Retail price Eur/pcs.
channel 1,0m	150	Ø 110	-	SOP10151356	112,00	SOP10151370	119,00
channel 0,5m	150	Ø 110	yes	SOP10155356	78,00	SOP10155370	83,00
channel 1,0m	200	Ø 110	-	SOP10201356	121,00	SOP10201370	128,00
channel 0,5m	200	Ø 110	yes	SOP10205356	85,00	SOP10205370	90,00
channel 1,0m	250	Ø 110	-	SOP10251356	135,00	SOP10251370	142,00
channel 0,5m	250	Ø 110	yes	SOP10255356	94,00	SOP10255370	99,00

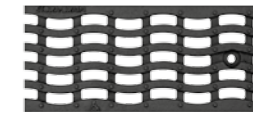
STORA-DRAIN OPTIMA PLUS 150 CHANNEL + GRATING

D400



- anchorage screw
- ductile iron grating "WAVE"

E600



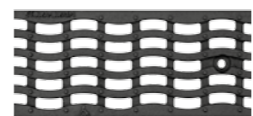
- anchorage screw
- ductile iron grating "WAVE"

B=150 C=182 D=190	H	Vertical outlet	Cross channel	Article number	Retail price Eur/pcs.	Article number	Retail price Eur/pcs.
channel 1,0m	195	Ø 160	-	SOP15191357	160,00	SOP15191371	179,00
channel 0,5m	195	Ø 160	yes	SOP15195357	111,00	SOP15195371	125,00
channel 1,0m	245	Ø 160	-	SOP15241357	167,00	SOP15241371	186,00
channel 0,5m	245	Ø 160	yes	SOP15245357	117,00	SOP15245371	130,00

i All dimensions **B, C, D, H** are in **mm**, half of quantity on one pallet are with possibility to make vertical outlet.

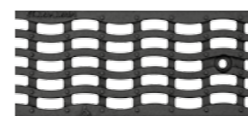
SUMP UNIT 100

D400

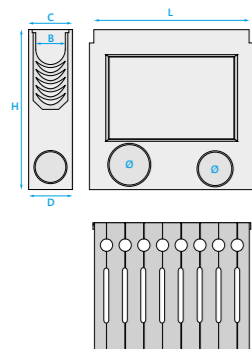


- One part sump unit + bucket + iron grating "WAVE"

E600



- One part sump unit + bucket + iron grating "WAVE"

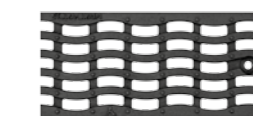


L	500	500
H	500	500
Outlet front/side	Ø 110/160	Ø 110/160
Article number	AU12001356	AU12001370
Retail price Eur/pcs.	187,00	195,00

i All dimensions **B, D, L, H** are in **mm**.

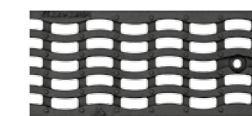
SUMP UNIT 150

D400

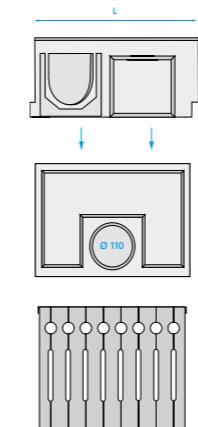


- Two parts sump unit + bucket + iron grating "WAVE"

E600



- Two parts sump unit + bucket + iron grating "WAVE"



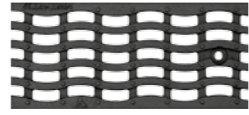
L	500	500
H	655	655
Outlet front/side	Ø 110/160/200	Ø 110/160/200
Article number	AU12101357	AU12101371
Retail price Eur/pcs.	293,00	313,00

i All dimensions **B, D, L, H** are in **mm**.

STORA-DRAIN
OPTIMA PLUS 200

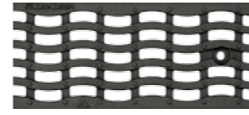
CHANNEL + GRATING

D400



- anchorage screw
- ductile iron grating "WAVE"

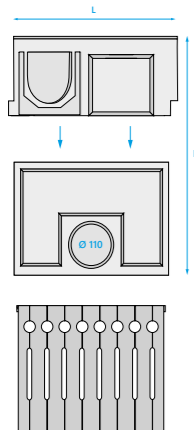
E600



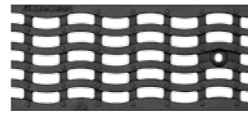
- anchorage screw
- ductile iron grating "WAVE"

B=200 C=232 D=240	H	Vertical outlet	Cross channel	Article number	Retail price Eur/pcs.	Article number	Retail price Eur/pcs.
channel 1,0m	245	Ø 200	-	SOP20241358	202,00	SOP20241372	249,00
channel 0,5m	245	Ø 200	yes	SOP20245358	142,00	SOP20245372	174,00

SUMP UNIT 200

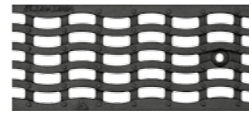


D400



- Two parts sump unit + bucket + iron grating "WAVE"

E600



- Two parts sump unit + bucket + iron grating "WAVE"

L	500	500
H	655	655
Outlet front/side	Ø 110/160/200	Ø 110/160/200
Article number	AU12201358	AU12201372
Retail price Eur/pcs.	307,00	366,00

STEPPED FALL 100/150

Type	For channel (H)	Article number	Retail price Eur/pcs.
100	H 150/200/250	AL10000100	15,00
150	H 195/245	AL15000200	20,00



SEALANT

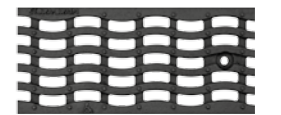
Type	Color	Capacity	Article number	Retail price Eur/pcs.
Sealant to connect elements from polyester concrete	grey	310 ml	PUP0000310	15,00



STORA-DRAIN
OPTIMA PLUS 300

CHANNEL + GRATING

D400

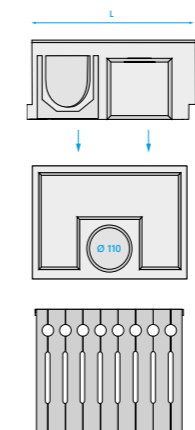


- anchorage screw
- ductile iron grating "WAVE"

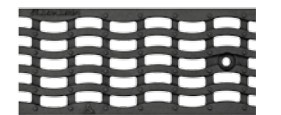


B=300 C=332 D=340	H	Vertical outlet	Cross channel	Article number	Retail price Eur/pcs.
channel 1,0m	295	Ø 200	-	SOP30291359	328,00
channel 0,5m	295	Ø 200	no	SOP30295359	230,00

SUMP UNIT 300



D400



- Two parts sump unit + bucket + iron grating "WAVE"

L	500	500
H	645	645
Outlet front/side	Ø 110/160/200	Ø 110/160/200
Article number	AU12201359	AU12201372
Retail price Eur/pcs.	374,00	374,00

ENDCAPS 100/150/200/300

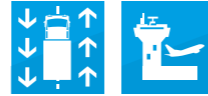
Type	H	Outlet	Article number	Retail price Eur/pcs.
100	150	closed	AE10078000	20,00
100	150	Ø 110 with pipe	AE10088000	28,00
100	200	closed	AE10098000	20,00
100	200	Ø 110 with pipe	AE10108000	28,00
100	250	closed	AE10118000	20,00
100	250	Ø 110 with pipe	AE10128000	28,00
150	195	Ø 110 universal	AE15028000	28,00
150	245	Ø 110 universal	AE15038000	28,00
200	245	Ø 160 universal	AE20018000	31,00
300	295	Ø 200 universal	AE30018000	53,00

10

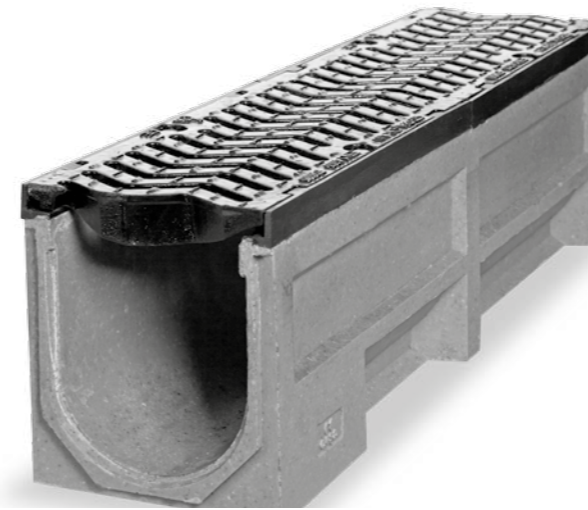
STORA-DRAIN

SUPER

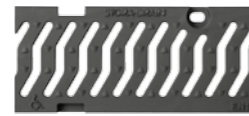
D400 / F900



POLYESTER CONCRETE DRAINAGE CHANNEL WITH PROTECTIVE IRON PROFILE

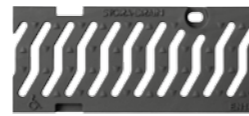


D400



- stainless steel anchorage
- ductile iron grating "S"

F900



- stainless steel anchorage
- ductile iron grating "S"

STORA-DRAIN

SUPER

100

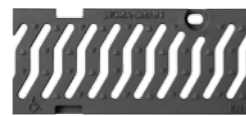
CHANNEL + GRATING

B=100 C=147 D=160	NR	H	Vertical outlet	Cross channel	Article number	Retail price Eur/pcs.	Article number	Retail price Eur/pcs.
channel 1,0m	S1	185	Ø 110	-	SU10181322	170,00	SU10181337	on request
channel 0,5m	S1	185	Ø 110	yes	SU10185322	110,00	SU10185337	on request
channel 1,0m	S2	235	Ø 110	-	SU10231322	183,00	SU10231337	on request
channel 0,5m	S2	235	Ø 110	yes	SU10235322	119,00	SU10235337	on request
channel 1,0m	S3	287	Ø 110	-	SU10281322	196,00	SU10281337	on request
channel 0,5m	S3	287	Ø 110	yes	SU10285322	128,00	SU10285337	on request

i ■ Class D400 is not dedicated for express and highways cross road drainage

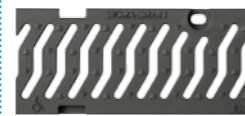
SUMP UNIT 100

D400



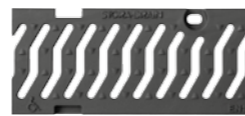
- One part sump unit + bucket + iron grating slot "S"

D400

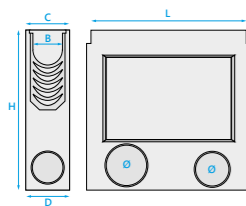


- One part sump unit + bucket + iron grating slot "S"

F900



- One part sump unit + bucket + iron grating slot "S"



L	500	500	500
H	390	590	590
Outlet front/side	Ø 110	Ø 110/160	Ø 110/160
Article number	AU10311322	AU10301322	AU10301337
Retail price Eur/pcs.	151,00	177,00	on request

i All dimensions B, D, L, H are in mm.

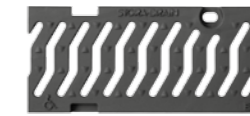
STORA-DRAIN

SUPER

150

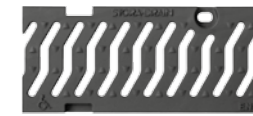
CHANNEL + GRATING

D400



- stainless steel anchorage
- ductile iron grating "S"

F900



- stainless steel anchorage
- ductile iron grating "S"

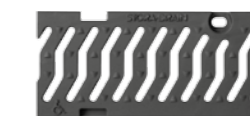
B=150 C=197 D=210	H	Vertical outlet	Cross channel	Article number	Retail price Eur/pcs.	Article number	Retail price Eur/pcs.
channel 1,0m	170	Ø 160	-	SU15171320	230,00	SU15171328	on request
channel 1,0m	220	Ø 160	-	SU15221320	236,00	SU15221328	on request
channel 1,0m	270	Ø 160	-	SU15271320	241,00	SU15271328	on request
channel 0,5m	270	390x125	yes	SU15275320	157,00	SU15275328	on request

i ■ Class D400 is not dedicated for express and highways cross road drainage

***** For channels SUPER 150 / H=170 or SUPER 150 / H=220, is necessary to buy STEPPED FALL to connect channels with SUMP UNIT.

SUMP UNIT 150*

D400

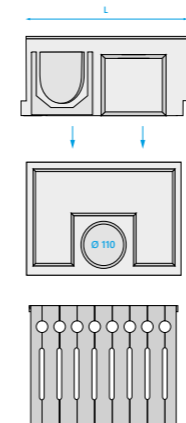


- Two parts sump unit + bucket + iron grating slot "S"

F900



- Two parts sump unit + bucket + iron grating slot "S"

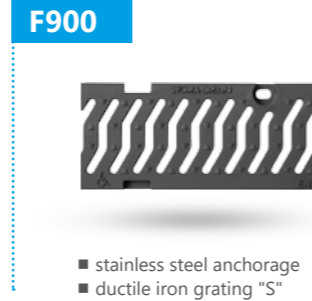
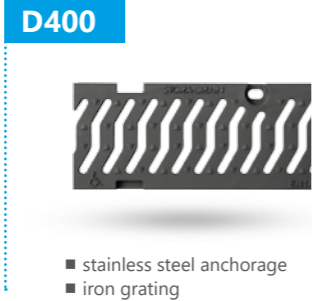


L	500	500
H	620	620
Outlet front/side	Ø 110/160/200	Ø 110/160/200
Article number	AU10401320	AU10401328
Retail price Eur/pcs.	319,00	on request

i All dimensions B, D, L, H are in mm.

STORA-DRAIN
SUPER 200
CHANNEL + GRATING

B=200 C=247 D=260	H	Vertical outlet	Cross channel	Article number	Retail price Eur/pcs.	Article number	Retail price Eur/pcs.
channel 1,0m	130	Ø 160	-	SU20131329	272,00	SU20131325	on request
channel 0,5m	130	-	-	SU20135329	177,00	SU20135325	on request
channel 1,0m	180	Ø 200	-	SU20181329	277,00	SU20181325	on request
channel 1,0m	240	Ø 200	-	SU20241329	283,00	SU20241325	on request
channel 1,0m	300	Ø 200	-	SU20301329	288,00	SU20301325	on request
channel 0,5m	300	390x130	yes	SU20305329	187,00	SU20305325	on request



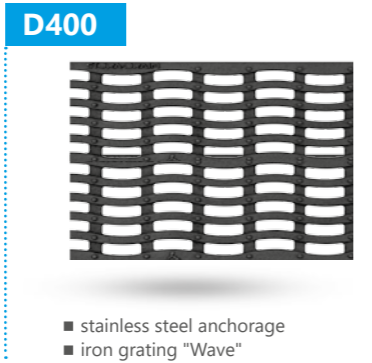
STORA-DRAIN
SUPER 300
CHANNEL + GRATING

B=300 C=347 D=360	Vertical outlet	H-D400	H-F900	Article number	Retail price Eur/pcs.	Article number	Retail price Eur/pcs.
channel 1,0m	Ø 200	225	245	SU30221364	393,00	SU30241333	on request
channel 1,0m	Ø 200	285	305	SU30281364	393,00	SU30301333	on request
channel 1,0m	Ø 200	345	365	SU30341364	393,00	SU30361333	on request
channel 0,5m	390x210	345	365	SU30345364	257,00	SU30365333	on request



STORA-DRAIN
SUPER 400
CHANNEL + GRATING

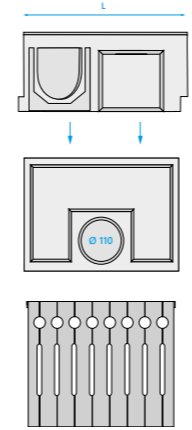
B=400 C=447 D=460	Vertical outlet	H	Article number	Retail price Eur/pcs.
channel 1,0m	-	460	SU40461368	628,00
channel 0,5m	-	460	SU40465368	419,00



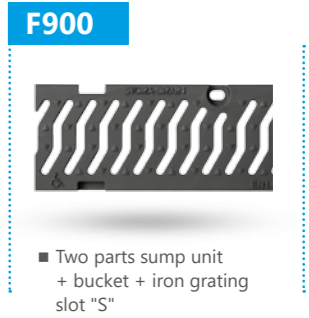
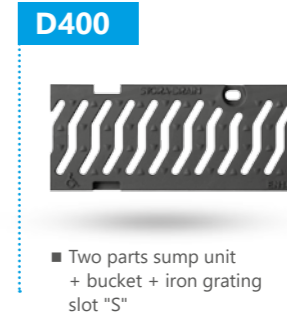
36 **i** ■ Class D400 is not dedicated for express and highways cross road drainage

SUPER

SUMP UNIT 200*



L	500	500
H	650	650
Outlet front/side	110/160/200/225/250	110/160/200/225/250
Article number	AU10601329	AU10601325
Retail price Eur/pcs.	358,00	on request

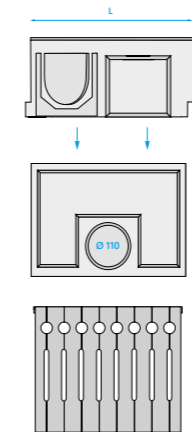


SUMP UNIT 300*

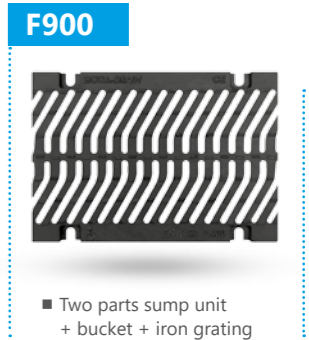
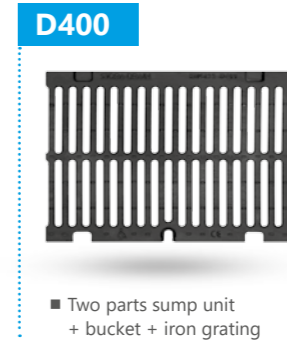
* For channels:

SUPER 200, H=180/240
or **SUPER 300, H=245/305,**

is necessary to buy **STEPPED FALL** to connect channels with **SUMP UNIT**.



L	500	500
H	695	715
Outlet front/side	Ø 110/160/200/225/250	Ø 110/160/200/225/250
Article number	AU10601364	AU10601333
Retail price Eur/pcs.	440,00	on request



SEALANT

Type	Color	Capacity	Article number	Retail price Eur/pcs.
Sealant to connect elements from polyester concrete	grey	310 ml	PUP0000310	15,00

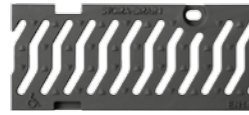


37 **i** All dimensions **B, D, L, H** are in **mm**.

STORA-DRAIN
SUPER 100

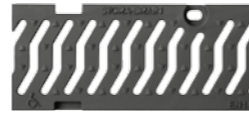
CHANNEL with built-in fall 0,5%
+ GRATING

D400



- stainless steel anchorage
- iron grating

F900

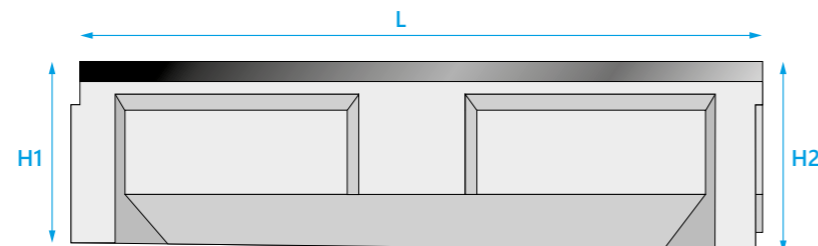


- stainless steel anchorage
- ductile iron grating "S"

B=100 C=147 D=160	NR	H1	H2	Vertical outlet	Article number	Retail price Eur/pcs.	Article number	Retail price Eur/pcs.
channel 1,0m	1	131	137	-	SU10001322	170,00	SU10001337	on request
channel 1,0m	2	137	143	-	SU10002322	170,00	SU10002337	on request
channel 1,0m	3	143	149	-	SU10003322	170,00	SU10003337	on request
channel 1,0m	4	149	155	-	SU10004322	170,00	SU10004337	on request
channel 1,0m	5	155	161	Ø 110	SU10005322	170,00	SU10005337	on request
channel 1,0m	6	161	167	-	SU10006322	170,00	SU10006337	on request
channel 1,0m	7	167	173	-	SU10007322	170,00	SU10007337	on request
channel 1,0m	8	173	179	-	SU10008322	170,00	SU10008337	on request
channel 1,0m	9	179	185	-	SU10009322	170,00	SU10009337	on request
channel 1,0m	10	185	190	Ø 110	SU10010322	170,00	SU10010337	on request
channel 1,0m	11	190	195	-	SU10011322	183,00	SU10011337	on request
channel 1,0m	12	195	200	-	SU10012322	183,00	SU10012337	on request
channel 1,0m	13	200	205	-	SU10013322	183,00	SU10013337	on request
channel 1,0m	14	205	210	-	SU10014322	183,00	SU10014337	on request
channel 1,0m	15	210	215	Ø 110	SU10015322	183,00	SU10015337	on request
channel 1,0m	16	215	220	-	SU10016322	183,00	SU10016337	on request
channel 1,0m	17	220	225	-	SU10017322	183,00	SU10017337	on request
channel 1,0m	18	225	230	-	SU10018322	183,00	SU10018337	on request
channel 1,0m	19	230	235	-	SU10019322	183,00	SU10019337	on request
channel 1,0m	20	235	240	Ø 110	SU10020322	183,00	SU10020337	on request

i ■ Class D400 is not dedicated for express and highways cross road drainage

STORA SUPER
channel B=100
with built-in fall 0,5%



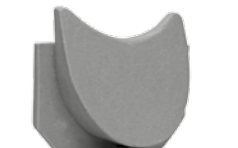
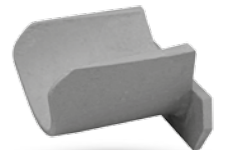
i All dimensions B, D, L, H are in mm.

ENDCAPS 100/150/200/300

Type	Nr	Installation at the beginning or end of channel	Ready outlet with rubber and cap	Article number	Retail price Eur/pcs.
100	1-5	nr 1 till 5	Ø 110	AE10005000	28,00
100	6-10/S1	nr 6 till 10, S1 H=185	closed	AE10055000	18,00
100	6-10/S1	nr 6 till 10, S1 H=185	Ø 110	AE10015000	28,00
100	11-15	nr 11 till 15	Ø 110	AE10025000	28,00
100	16-20/S2	nr 16 till 20, S2 H=235	Ø 110	AE10035000	28,00
100	S3	S3 H=287	Ø 110	AE10045000	28,00
150	150	H=170	Ø 110	AE15005000	28,00
150	150	H=220	Ø 110	AE15015000	28,00
150	150	H=270	Ø 160	AE15025000	28,00
200	200	H=130	closed	AE20005000	18,00
200	200	H=180	Ø 110	AE20015000	31,00
200	200	H=240	Ø 160	AE20025000	31,00
200	200	H=300	Ø 160	AE20035000	31,00
300	300	H=225-245	Ø 160	AE30005000	53,00
300	300	H=285-305	Ø 200	AE30015000	53,00
300	300	H=345-365	Ø 200	AE30025000	53,00
400	400	H=460	Ø 200	AE40001000	70,00

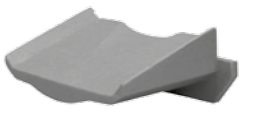
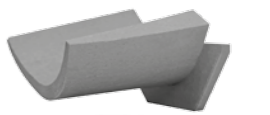
STEPPED FALL 100/150

Type	Nr	For channel (H)	Article number	Retail price Eur/pcs.
100	S1	H=185, 235, 287	AL10000000	15,00
150	S1	H=170-220, 220-270	AL15000000	31,00
150	S2	H=170 / 270	AL15010000	20,00



STEPPED FALL 200/300

Type	Nr	For channel (H)	Article number	Retail price Eur/pcs.
200	S1	H=180-240, 240-300	AL20000000	31,00
200	S2	H=180 / 300	AL20010000	20,00
300	S1	H=245-305, 305-365	AL20020000	38,00
300	S2	H=245 / 365	AL20030000	31,00



i All dimensions B, D, L, H are in mm.



O.P.S.O. Sp. z o.o. ● ul. Spółdzielcza 58 ● 58-500 Jelenia Góra
tel. +48 75 649 12 65 ● fax +48 75 649 11 65
stora@stora-drain.pl



 STORA-DRAIN

www.stora-drain.eu